

Contents

AtlantisFTP allows you to send and receive files to and from the Internet. Via its simple and easy to use interface, files that could be on the other side of the world are a mere mouse click away. Receive shareware, software updates and all manner of files from the internet quickly and easily using AtlantisFTP.

- [Quick start tutorial](#)
- [Main window reference](#)


Quick Start Tutorial

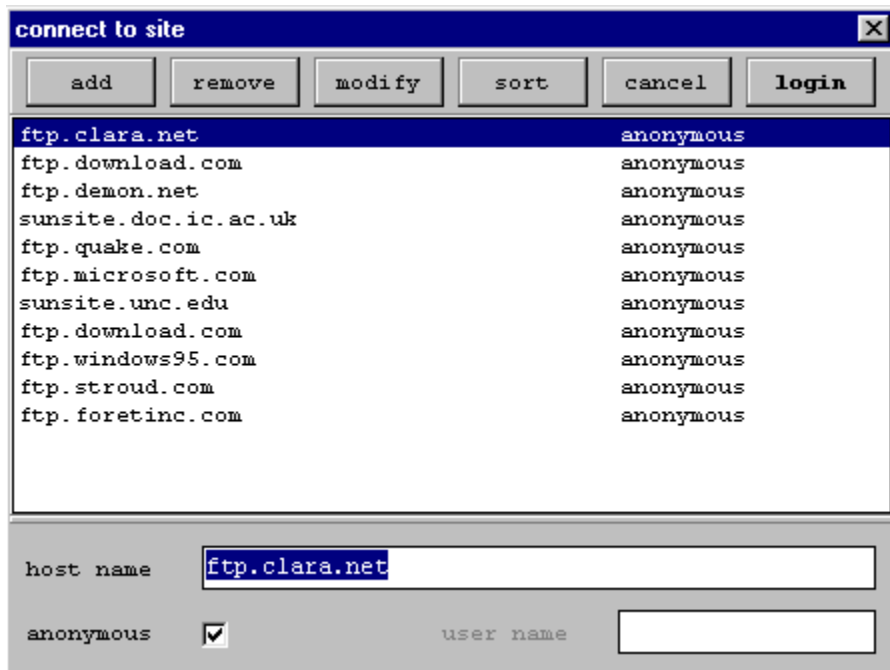
To use AtlantisFTP to either send or receive files across the internet follow these steps:

- Connect to the remote computer where you wish to either send or receive files.
- Select the directory on both the remote and local computer where you wish files to be transferred.
- Transfer the selected files.

Return to previous page.

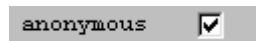
Connect

Click on the  **Connect** button. This will bring up the following dialog box:

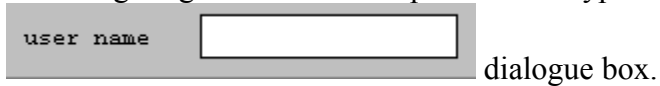


To connect to a site that is already in this listing, select it and click on the  **login** button.

If you wish to connect anonymously then leave the tick in the box like so:



If you want to access your own directory on a site (e.g. to upload a web page), you need to connect giving a username and password. Type in the username into the



[Return](#) to previous page.

Select Directory

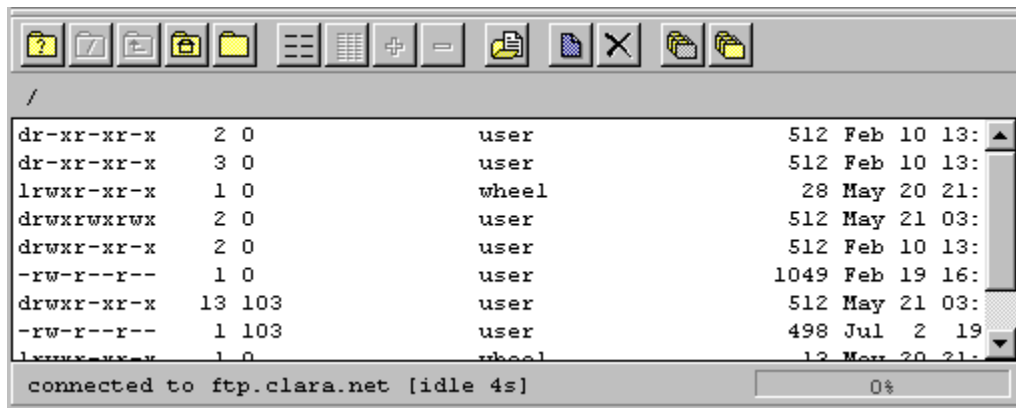
The following details how to select and navigate through directories on both the local and remote machine.

Local machine:




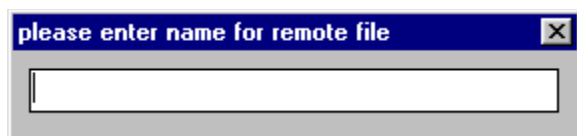
This part of the main screen allows you to navigate through the directories of your machine. The box to the left lists the file in the selected directory. You can change the directory by clicking on the name of the one you want.

Remote machine:



The directory listing of the remote directory is in the lower part of the main screen. To get to the sub-directory you want, double-click on each directory name in turn.

To make a new directory click on the  **make new directory** button. The following dialogue box will come up asking you what you want to name it:



To delete a directory click on the  **delete directory** button. The following dialogue button

will appear:



Return to previous page.

File Transfer

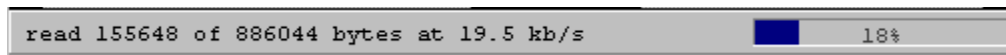
To transfer a file once you are connected, select the file you want to transfer (if you want to upload a file from your computer, select it from the listing in the top right and if you want to download it from the remote computer, select it from the listing on the lower part of the screen).

Then decide what **transfer mode** the file should be transferred in. There is a choice of two - **binary** and **ascii**. Ascii is for text files and all other sorts of files - zips, programs, images, should be transferred as binary. To change the mode click on one of the following two buttons:



b for binary and **a** for ascii. If you transfer a file using the wrong mode it will be unusable.

Once the mode has been selected, double-click on your selected file and it will be transferred. At the very bottom of the main program screen a progress bar will be displayed - this will tell you how long the transfer is taking and how much has been transferred:



[Return](#) to previous page.

Main Window Reference

The main window displays which directory is currently live on your hard drive and the directory listing on the remote site. Here is a listing of what each button does.



Connect - this button brings up the connection dialogue box to allow you to connect to remote sites.



Disconnect - this button disconnects you from the remote site.



More columns - this button allows you to increase the number of columns you use to display the directory list.



Less columns - this allows you to decrease the number of columns you use to display the directory list.



Put - this button copies the selected file in the local directory into the current directory on the remote site.



Rename - renames the selected local file.



Delete - deleted the selected local file.



Launch - runs the selected local file.



View - allows you to view downloaded picture files.



Rename - rename local directories.



Delete - delete local directories.



Make - make local directoy.



Transfer mode - select binary or ascii to upload files.



Cancel - stops any transfer in progress.



Help - brings up this file.



Select - select which directory you want a listing for,



Root Directory - goes back up to the top of the directory tree.



Parent - goes back up one step in the directory tree.



Home - returns to the home directory.



Dir - gives you a refreshed listing of the directory you are currently in.



Names and Detail - these allow you to switch between listing jsut by name or including size as well.



Get - Copies the selected remote file onto your hard disk.



Rename - renames remote file.



Delete - delete the selected remote file.



Delete Dir - deletes remote directory.

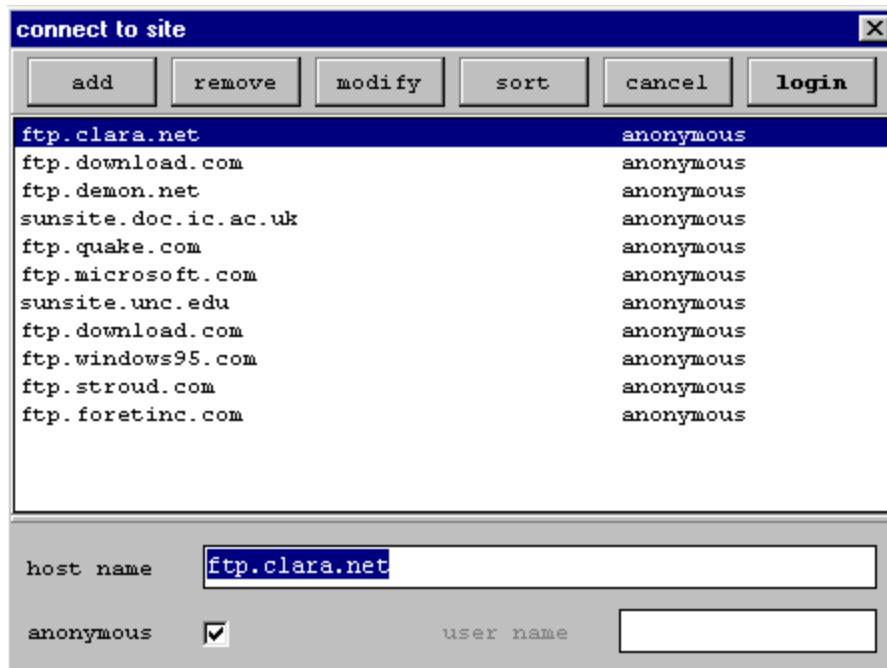


Make Dir - makes new directory on remote directory.

[Return](#) to previous page.

Connection Dialogue Box

This box comes up with a list of sites for you to connect to. You can either select one of the pre-set sites or add a new one of your own.



To connect to a pre-set site, select the site and then press the **login** button.

To set up a new site, fill in the information at the bottom - host name, if it's an anonymous logon and a username if it's not and then Click on the **add** button.

To correct/change a site, select it, change the information and then click on **modify**.

To remove a site, select it and click on **remove**.

To arrange them in alphabetical order, click on **sort**.

[Return](#) to previous page.

An anonymous login is when you connect to a site where you don't have an account of your own. It is conventional to give your email address as a password. You can usually download anything from the public part of the site but you can only upload to the incoming directory.

Downloading a file is the name used for the process of copying it from the remote site to your computer.

A sub-directory is a directory contained within another one - when you get the address for a file it will usually be in the form: **ftp.site.com/pub/directory/sub/sub-sub/filename**. To find the file, click first on **pub**, then on **directory**, then on **sub** and finally on **sub-sub**.

Uploading is the term used to describe copying a file from your local machine to the remote computer.

Your username is usually the part in front of the @ sign in your email address.

